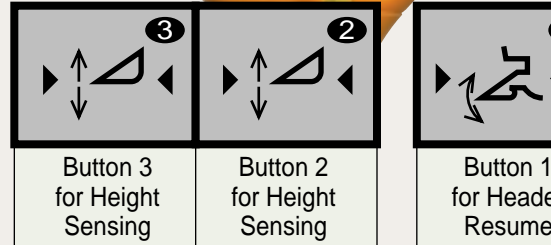
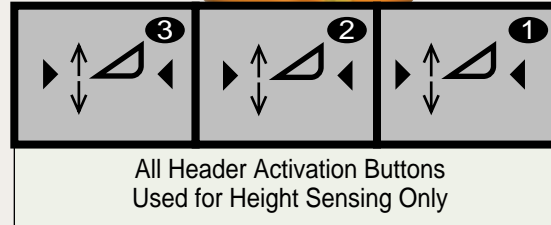
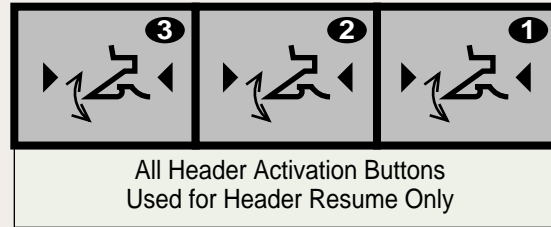


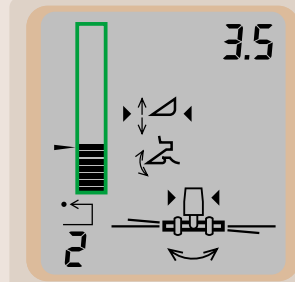
## Active Header Control Functions

Header Control Mode Enabled **Note:** ▶◀ indicates the selected mode is active.  
Header Activation Buttons



## CommandTouch Cornerpost Selection Modes

### Active Header Control Display

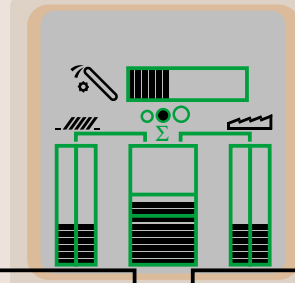


Header Height Sensing (Enable/Disable) [Icon]

Header Height Resume (Enable/Disable) [Icon]

Contour Master (Enable/Disable) [Icon]

### VisionTrack Loss Monitor Display



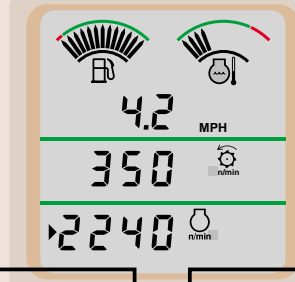
Scroll Up [Icon]    Back [Icon]

Calibrate [CAL] [Icon] [Icon] [Icon]    Diagnostics [Icon]

Seed Size [Icon] [Icon] [Icon]

Scroll Down [Icon]    Enter [Icon]

### Digital Tach Display



Threshing Speed [Icon]    Concave Clearance [Icon]

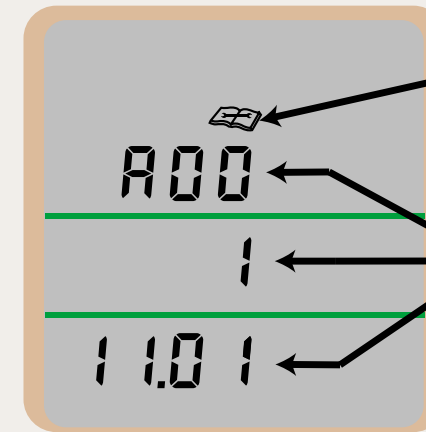
Engine Speed [Icon] [Icon] [Icon] [Icon]    Display Line Select [Icon]

Cleaning Fan Speed [Icon]    Header Backshaft Speed [Icon]

Engine & Separator Hours [Icon] [Icon]

## Digital Tach Warning/Alert Display

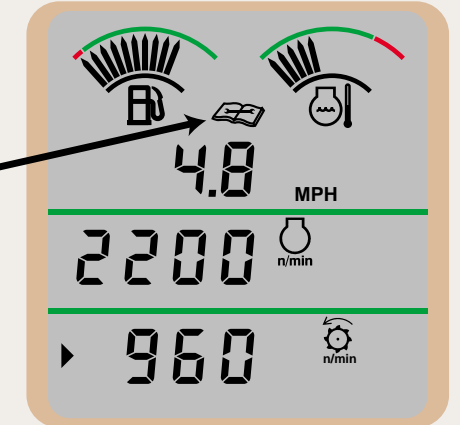
**STOP ENGINE AT ONCE AND CORRECT WHEN:**



Diagnostic icon is on **steady** and . . .

. . . a diagnostic trouble code is displayed on the three lines. This means a corrective action is immediately required. Do not operate combine until the problem is corrected.

**SERVICE OR CORRECT PROBLEM WHEN:**



Diagnostic icon is **flashing continuously**. This means a diagnostic code has been generated. Stop the combine when convenient and determine the cause.

**RECOMMENDED INITIAL SETTING FOR COMMON CROPS**

**ADJUSTMENT GUIDE**

<p><b>Barley</b></p> <p>Threshing Speed (rpm).....600                  Concave Indicator.....0                  Fan Speed (rpm).....950                  Precleaner Turns.....0                  Chaffer Clearance (mm).....19                  Extension.....19                  Sieve Clearance (mm).....6</p>	<p><b>Corn — Dry</b></p> <p>Threshing Speed (rpm).....300                  Concave Indicator.....42                  Fan Speed (rpm).....1200                  Precleaner Turns.....3                  Chaffer Clearance (mm).....16                  Extension.....12                  Sieve Clearance (mm).....11</p>	<p><b>Corn — Wet</b></p> <p>Threshing Speed (rpm).....330                  Concave Indicator.....38                  Fan Speed (rpm).....1400                  Precleaner Turns.....3                  Chaffer Clearance (mm).....16                  Extension.....12                  Sieve Clearance (mm).....11</p>	<p><b>Edible Beans</b></p> <p>Threshing Speed (rpm).....160                  Concave Indicator.....38                  Fan Speed (rpm).....1000                  Precleaner Turns.....0                  Chaffer Clearance (mm).....16                  Extension.....12                  Sieve Clearance (mm).....11</p>	<p><b>Oats</b></p> <p>Threshing Speed (rpm).....600                  Concave Indicator.....0                  Fan Speed (rpm).....950                  Precleaner Turns.....0                  Chaffer Clearance (mm).....16                  Extension.....16                  Sieve Clearance (mm).....6</p>	<p><b>Rape (Canola)</b></p> <p>Threshing Speed (rpm).....380                  Concave Indicator.....38                  Fan Speed (rpm).....700                  Precleaner Turns.....0                  Chaffer Clearance (mm).....10                  Extension.....10                  Sieve Clearance (mm).....5</p>
<p><b>Rice (Raspbar)</b></p> <p>Threshing Speed (rpm).....650                  Concave Indicator.....0                  Fan Speed (rpm).....1050                  Precleaner Turns.....0                  Chaffer Clearance (mm).....16                  Extension.....16                  Sieve Clearance (mm).....6</p>	<p><b>Rice (Spike)</b></p> <p>Threshing Speed (rpm).....600                  Concave Indicator.....22                  Fan Speed (rpm).....1050                  Precleaner Turns.....0                  Chaffer Clearance (mm).....16                  Extension.....16                  Sieve Clearance (mm).....6</p>	<p><b>Sorghum (Milo)</b></p> <p>Threshing Speed (rpm).....600                  Concave Indicator.....35                  Fan Speed (rpm).....1100                  Precleaner Turns.....0                  Chaffer Clearance (mm).....16                  Extension.....16                  Sieve Clearance (mm).....6</p>	<p><b>Soybeans</b></p> <p>Threshing Speed (rpm).....300                  Concave Indicator.....38                  Fan Speed (rpm).....1000                  Precleaner Turns.....0                  Chaffer Clearance (mm).....16                  Extension.....12                  Sieve Clearance (mm).....10</p>	<p><b>Sunflowers</b></p> <p>Threshing Speed (rpm).....300                  Concave Indicator.....45                  Fan Speed (rpm).....1000                  Precleaner Turns.....0                  Chaffer Clearance (mm).....12                  Extension.....12                  Sieve Clearance (mm).....6</p>	<p><b>Wheat</b></p> <p>Threshing Speed (rpm).....600                  Concave Indicator.....0                  Fan Speed (rpm).....1050                  Precleaner Turns.....0                  Chaffer Clearance (mm).....16                  Extension.....16                  Sieve Clearance (mm).....6</p>

**To optimize Performance – Check . . .**

Make one adjustment at a time

AREAS TO ADJUST	LOSSES		GRAIN TANK SAMPLE			TAILINGS RETURN	
	Unthreshed (Separator)	Free Grain	Dirty Tank Sample	Unthreshed Material	Grain Damage	Unthreshed	Excessive Clean Grain
<b>Concave/ Threshing Speed</b>	<ol style="list-style-type: none"> <li>1. Decrease concave clearance</li> <li>2. Install rear concave inserts</li> <li>3. Increase cylinder RPM</li> </ol>	<ol style="list-style-type: none"> <li>1. Decrease concave clearance</li> <li>2. Reduce cyl RPM if overthreshed (broken straw)</li> <li>3. Remove rear concave inserts (corn and beans)</li> <li>4. Reduce ground speed</li> </ol>	<ol style="list-style-type: none"> <li>1. Increase concave clearance</li> <li>2. Install rear concave inserts</li> </ol>	<ol style="list-style-type: none"> <li>1. Increase cylinder RPM</li> <li>2. Decrease concave clearance</li> <li>3. Install concave filler strips</li> </ol>	<ol style="list-style-type: none"> <li>1. Decrease cylinder RPM</li> <li>2. Increase concave clearance</li> <li>3. Increase ground speed</li> </ol>	<ol style="list-style-type: none"> <li>1. Decrease concave clearance</li> <li>2. Increase cylinder RPM</li> </ol>	
<b>Shoe</b>		<ol style="list-style-type: none"> <li>1. Losing with light loads - decrease fan RPM</li> <li>2. Losing with heavy loads - increase fan RPM</li> <li>3. Install rear concave inserts (corn and beans)</li> <li>4. Reduce ground speed</li> </ol>	<ol style="list-style-type: none"> <li>1. Increase fan RPM</li> <li>2. Decrease sieve opening</li> <li>3. Decrease precleaner (corn only)</li> </ol>	<ol style="list-style-type: none"> <li>1. Decrease sieve opening</li> </ol>	Reduce free grain in tailings by: <ol style="list-style-type: none"> <li>1. Increase sieve opening</li> <li>2. Reduce fan RPM</li> </ol>	<ol style="list-style-type: none"> <li>1. Increase sieve opening</li> <li>2. Reduce fan RPM</li> </ol>	